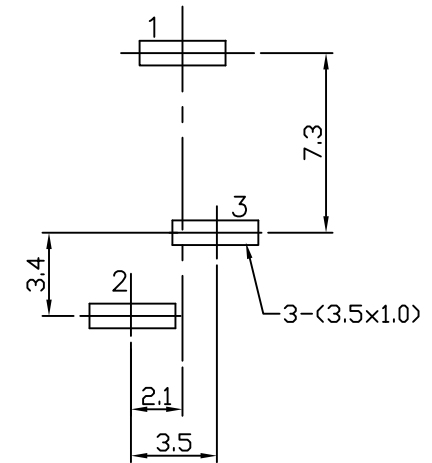
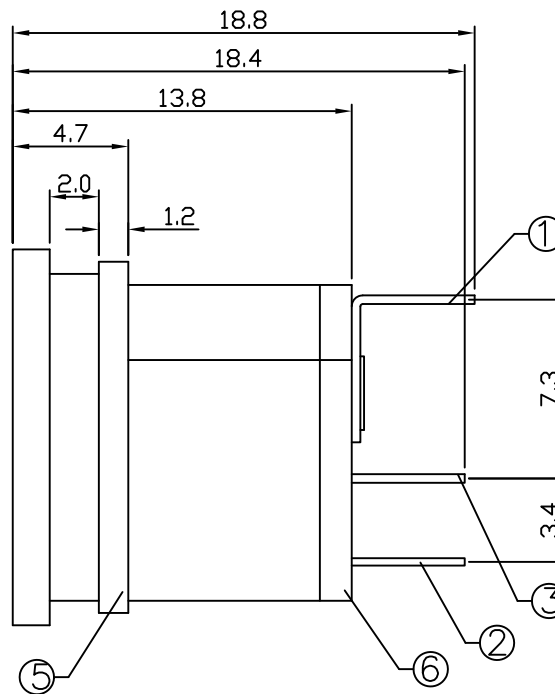
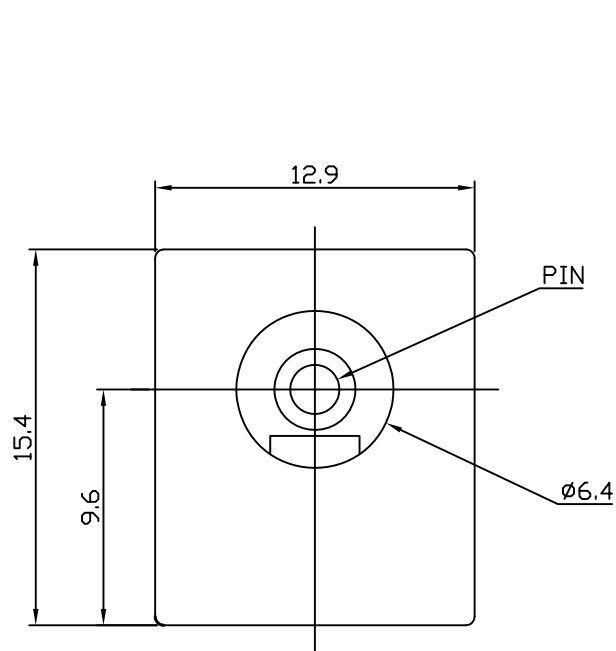


* REVISIONS				
LTR	DESCRIPTION	DATE	REVISED	APPROVED



T:1.6 Dimensions of PC board holes
Tolerance : ± 0.05 (Printed-top view)

SCHEMATIC	A	$\phi 2.0$	
-----------	---	------------	--

LEAD FREE

6	COVER		1	PF				
5	HOUSING		1	PBT 4815		UL-94V0 (BLACK)		
4	CENTER PIN		1	C2680		Sn PLATED		
3	SHUNT TERMINL		1	C2680		Ag PLATED		
2	TIP SPRING		1	C5191		Ag PLATED		
1	CENTER PIN TERMINAL		1	C2680		Ag PLATED		
LTR	PART NAME		QTY	MATERIAL		REMARK		
DWN	JON	DATE	2013.06.10	3RD ANGLE PROJECTION	NAME		DC POWER JACK	
CHKD	JON	DATE	2013.06.10		CAT. NO.			
APVD	ELVIS	DATE	2013.06.10		UNIT: mm	DCD-020-07A		
SWEETA PRODUCTS CORPORATION					DWN.NO. SHD-2019			001

UNLESS OTHERWISE SPECIFIED, TOLERANCE ON DECIMAL: ± 0.3

SWEETA PRODUCTS CORPORATION

SPECIFICATION

TITLE DC POWER JACK	SPC. NO.	PAGE : 1 OF 4 DATE : 2013.04.08
-------------------------------	-----------------	--

1.Scope

This specification applies to unified polarity type DC jack used in electronic equipment.
For DC input use.

2.Standard atmospheric conditions

Unless otherwise specified. The standard range of atmospheric condition for making measurements and tests are as follows :

Ambient temperature : 15°C to 35°C

Relative humidity : 25% to 80%

Air pressure : 86kPa to 106kPa

If there is any doubt about the results, measurements shall be made within the follow limits:

Ambient temperature : 20±2°C

Relative humidity : 60% to 70%

Air pressure : 86kPa to 106kPa

Operating temperature range: -25°C to 85°C

Storage temperature range: -25°C to 70°C

3.Mechanical characteristics

	Item	Conditions	Specification
1	Insertion force	Measurement shall be made after insertion and withdrawal using standard plug gauge 3 times.	2.94~29.4N (0.3~3kgf)
2	Withdrawal force	Measurement shall be made after insertion and withdrawal using standard plug gauge 3 times.	

ISSUE	DATE	WRTN	CHKD	APVD	DESCRIPTIONS
	2013.04.08	JON	JON	ELVIS	

SWEETA PRODUCTS CORPORATION

SPECIFICATION

TITLE		SPC. NO.	PAGE : 2 OF 4 DATE : 2013.04.08
DC POWER JACK			
4.Electrical characteristics			
	Item	Conditions	Specification
1	Rating		DC 12V , 3A
2	Contact resistance	1K Hz Measured at small current (1A or less)	30 m Ω or less
3	Insulation resistance	A voltage of 500V DC shall be applied for a minute. Between conductors which should not make contact under normal conditions after which measurement shall be made.	100M Ω MIN.
4	Dielectric strength	Between conductors which should not make contact under normal conditions. 500V AC (50 to 60Hz) for 1 min.(trip current 2mA)	Without distinct damage.
5.Endurance characteristics			
	Item	Conditions	Specification
1	Solderability	The terminals shall be dipped into soldering flux, and shall be immersed into molten solder of 230 \pm 5 $^{\circ}$ C for a period 3 \pm 0.5 seconds.	A new uniform coating of solder shall cover a minimum of 95% of the surface being immersed.
2	Resistance to soldering heat	The terminal for a printed circuit board : Temperature of solder : 260 \pm 5 $^{\circ}$ C Dip time : 5 \pm 1 seconds The terminal for a lead wire : Temperature of solder : 350 \pm 10 $^{\circ}$ C Dip time : 3 \pm 1 seconds	Electrical and mechanical characteristics shall be satisfied.
3	Cold	The jack shall be stored at a temperature of -40 $^{\circ}$ C \pm 2 $^{\circ}$ C for 96 hours. And then it shall be subjected to the controlled recovery conditions for 0.5 hours after which measurement shall be made.	Electrical and mechanical characteristics shall be satisfied.
4	Dry heat	The jack shall be stored at a temperature of 70 $^{\circ}$ C \pm 2 $^{\circ}$ C for 96 hours. And then it shall be subjected to the controlled recovery conditions for 0.5 hours after which measurement shall be made.	There shall be not show remarkable failure.
5	Humidity	The Pin Jack shall be subject to 90%~95%RH, 40 $^{\circ}$ C \pm 2 $^{\circ}$ C for 96 hours, and shall then be conditioned at room ambient conditions for a period of 30 minutes.	Electrical and mechanical characteristics shall be satisfied. Insulation resistance : 50M Ω MIN. Contact resistance : 50m Ω MAX.

SWEETA PRODUCTS CORPORATION

SPECIFICATION

TITLE DC POWER JACK	SPC. NO.	PAGE : 3 OF 4 DATE : 2013.04.08
-------------------------------	-----------------	--

	Item	Conditions	Specification
6	Life test	Insertion and withdrawal shall be made with the mating plugs and jacks for 5000 cycles at a speed of 10~30 cycles/min.	Insertion force : 29.4N MAX (3Kgf) Withdrawal force : 2.94~29.4N (0.3~3kgf) Contact resistance : Between plug and contact : 100mΩ MAX. Each closed contact : 60mΩ MAX.

6.Warning:

Dc power jack shall be dipped, warning to inferior contact by flux and transform mold.

Resistance to flux : It shall be prevention between PCB and housing.

Transform mold : It must not add direct heat to Dc power jack

Temperature of solder : 255℃ MAX.

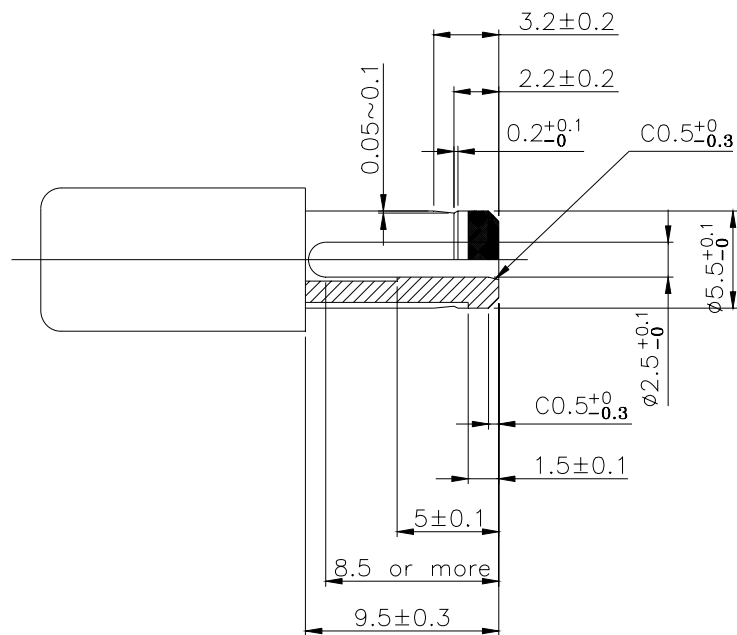
Preheat temperature : 90℃ MAX.

Preheat time : 2 minute MAX.

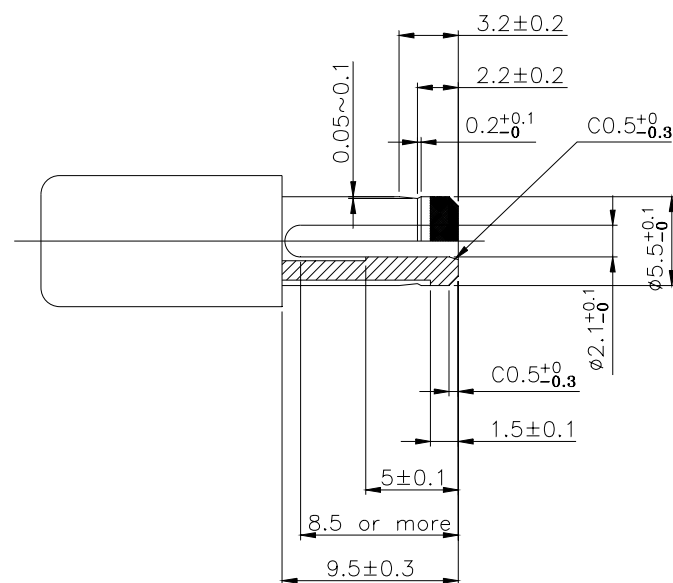
SWEETA PRODUCTS CORPORATION
SPECIFICATION

TITLE DC POWER JACK	SPC. NO.	PAGE : 4 OF 4 DATE : 2013.04.08
-------------------------------	-----------------	--

7. Mating plug dimension



Ø2.0 PLUG



Ø2.5 PLUG