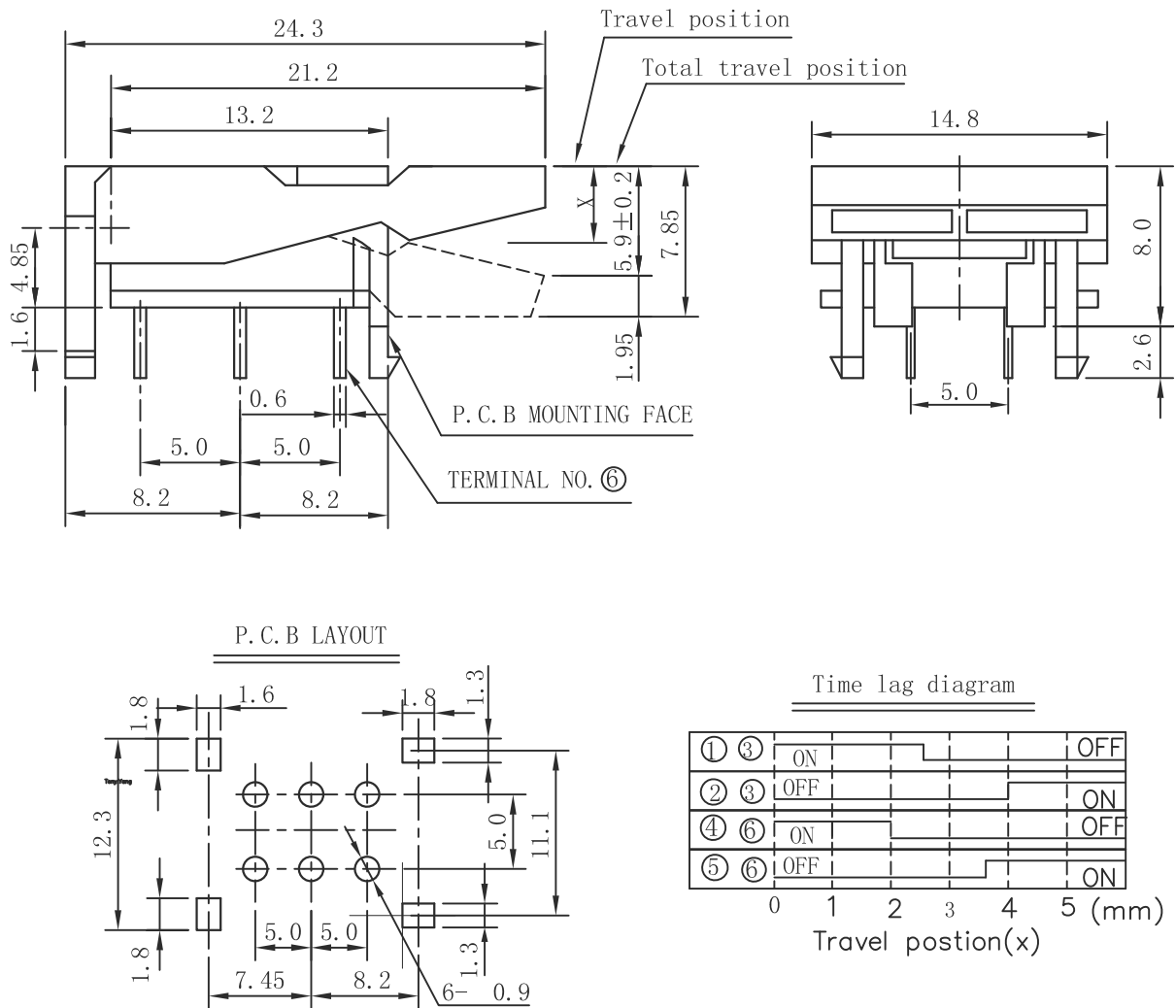


SWEETA PRODUCTS CORPORATION

SWITCH TYPE	HOOK SWITCHES	MODEL NO.	SHS010-A2-N
1. Functional spec.			
1.1 Rated Voltage	DC60V	1.6 Free Position	
1.2 Rated Current	0. 2A	1.7 Operating Position	
1.3 Contact Resistance	$\leq 100\text{m}\Omega$ (initial value)	1.8 Position Travel	$5.9\pm0.2\text{mm}$
1.4 Operating Force	200gf max	1.9 Return Force	
1.5 Bounce Time		1.10	
2.Reliable Rating			
2.1 Mechanical Life	500, 000 CYCLES	2.5 Soldering Temper	Hand Soldering
2.2 Electrical Life	300, 000 CYCLES	2.6 Shipping Temper	$-25^{\circ}\text{C} \sim 65^{\circ}\text{C}$
2.3 Insulation Resistance	$\geq 100\text{M}\Omega$ DC500V	2.7 Ambient Humidity Used	$<85\%\text{RH}$
2.4 Withstand Voltage	AC500V 1 minute	2.8	

3. Dimension Drawing

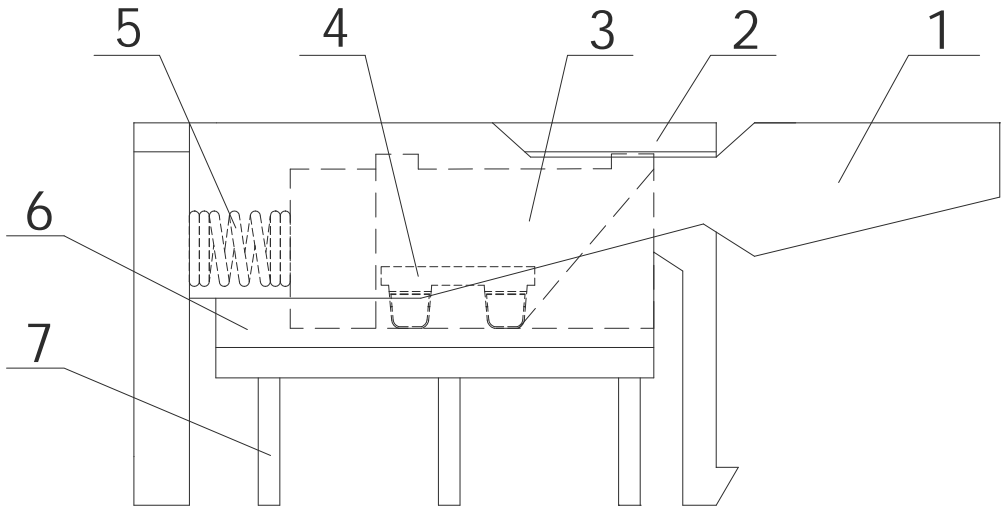


Revision		Description				Date	Revisor
Drawing No.				C/0		Tolerance	±0. 2
Drawing Model.		SPECIFICATION OF STANDARD TYPE				Unit	mm
Prepared	Angel.Lee	Reviewed	Tony. Yang	Approved	Kingsel.Wu	Effective date	20080722

SWEETA PRODUCTS CORPORATION

SERIES		HOOK SWITCHES(SHS010)		Issuance date :		20060801	
Document No.		DIC/PE010-001		Edition	C	Page	Page1 of 3
NO.	Part Name	Q'TY	Generic Class		SGS report No.		
1	Lever	1	POM		Attached SGS report		
2	Case	1	POM		Attached SGS report		
3	Stem	1	POM		Attached SGS report		
4	Clip	2	C5210		Attached SGS report		
5	Spring	1	SWP		Attached SGS report		
6	Base	1	PBT		Attached SGS report		
7	Terminal	6	C2680		Attached SGS report		

Structure chart:



SWEETA PRODUCTS CORPORATION

SERIES		HOOK SWITCHES(SHS010)		Issuance date :		20060801	
Document No.		DIC/PE010-001		Edition		C	Page Page2 of 3
1、General :							
1.1 Switch rating:		DC60V 0.2A					
1.2Operating temperature range		-25℃~65℃					
1.3 Preservative temperature range		-25℃~85℃					
1.4 Storage humidity range		<85%RH					
2.Performance							
2.1 Electrical characteristics							
Items		Test conditions				Criteria	
2.1.1	Contact resistance	Applying a static load twice the operating force to the stem, measurements shall be made between the terminals. Measurement shall be made with a contact resistance meter for 2mΩ precision under the condition which a voltage of DC 5V and a current of 0.1A shall be applied between the terminals.				Refer to individual product drawing.	
2.1.2	Insulation resistance	Spec. voltage (Refer to the 2.3 item of spec. drawing) is applied between each pair of terminals and between the terminal and the metal frame for one minute. Measurement shall be made with a test instrument of insulation resistance under the condition Spec. voltage is applied between the terminals .				Refer to individual product drawing.	
2.1.3	Dielectric withstand in voltage	Spec. voltage (Refer to the 2.4 item of spec. drawing)shall be applied across terminals and frame for one minute.				There shall be no breakdown	
3.Mechanical characteristics							
3.1	Operation force	Placing the switch such that the direction of switch operation is vertical, and then gradually increasing the load applied to the stem, the maximum load for the stem to come to operating position shall be measured.				Refer to individual product drawing.	
3.2	Terminal strength	A static load of 500gf Max shall be applied to the tip of the terminal for 30 sec. in any direction.				Electrical characteristics shall be satisfied without damage or excessive looseness of terminals.	
3.3	Displacement of actuator(Knob)	A static load of 500gf Max shall be applied to the terminal for 15 Sec. In any direction.					

SWEETA PRODUCTS CORPORATION

SERIES		HOOK SWITCHES(SHS010)		Issuance date :		20060801		
Document No.		DIC/PE010-001		Edition		C	Page	Page3 of 3
4. soldering characteristics								
Items			Test conditions			Criteria		
4.1		Hand soldering		Use a soldering iron of 30 watts, controlled at 350-360℃ approximately 3 seconds 1time while applying solder.			A new uniform coating of solder shall cover a minimum of 90% of the surface being immersed. There shall be no defects in appearance or in the mechanical functions.	
5. Durability characteristic								
5.1		Mechanical life		(1) Without loading (2) Operating speed : 60 cycles/minute (3) Push force : maximum value of operating force twice (4) Life: 500,000 cycles			After test: (1)Contact resistance: 1 ohm Max. (2)Bounce: 5m sec. Max. (3)Withstand voltage: AC500V, 1 minute (4)Operating force: 30% of initial value (5)There shall be no defects in appearance or in the mechanical functions.	
5.2		Electrical life		(1) which the load of 0.2A DC 60V (2) Operating speed : 30 cycles/minute (3) Push force : maximum value of operating force twice (4) Life: 300,000 cycles				
6. Packing explaintion								
6.1 100 PCS for one small box, 2 boxs for one bag,10 bags for one big box.								
7. Special Requirements								
7.1 Hazardous Substance Management: Follow SWEETA environmental requirements: Hazardous Substance DIC/WI/ G506.								
8. Quality records of delivered goods								
8.1 Package boxes or package bags should be attached labels or identifiers of Model No., Quantity and Quality Pursuing No. 8.2 There shall be quality records of inspection and test in package boxed.								